

HOFFMANN Fördertechnik
GmbH Wurzen

LIFTKET
ELECTRIC CHAIN HOISTS



Innovative electric chain hoists – Milestones on the way to success



1952



1954



1955



1956



The initial LIFTKET design has introduced the change to low headroom hoists by placing the motor and the gearbox on one horizontal level for the first time. The LIFTKET was the first hoist to launch the special patented safety clutch/brake system preventing a load drop if the clutch is damaged or even fully worn. The perfection of the new STAR LIFTKET clutch/brake system does not know anything to compare around the globe today.

Dresdener Straße 67 –
headquarter, bookkeeping and assembly



HOFFMANN Fördertechnik GmbH Wurzen

Since HOFFMANN Fördertechnik GmbH Wurzen has been set up initially on January the 1st 1948 electric hoists have been produced for more than 60 years now. Particularly during the last 20 years the company has been subsequently modernised and expanded.

Besides the development and the production of standard hoist products tailored to the specific demands of our customers play a central role and are practised part of our company philosophy.

LIFTKET hoists are available in over 40 countries worldwide and are daily proving their quality under very different applications and conditions. Our German dealer network and agencies in many countries provide the required service to most of our worldwide customers.



1966



Dresdener Straße 64 – sales, design
and engineering department



Dresdener Straße 66 –
Machining

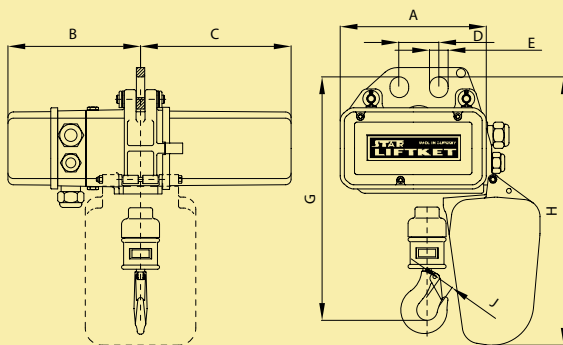


Dresdener Straße 68 –
Machining

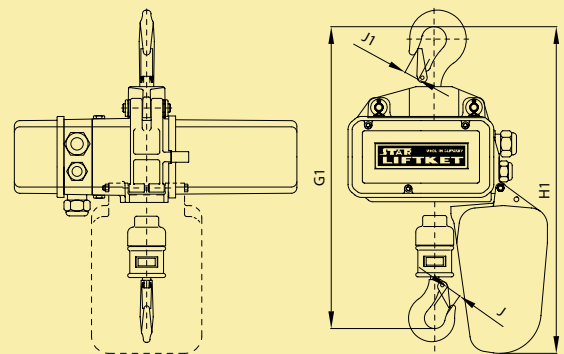
Three phase electric chain hoists

125 kg – 6300 kg

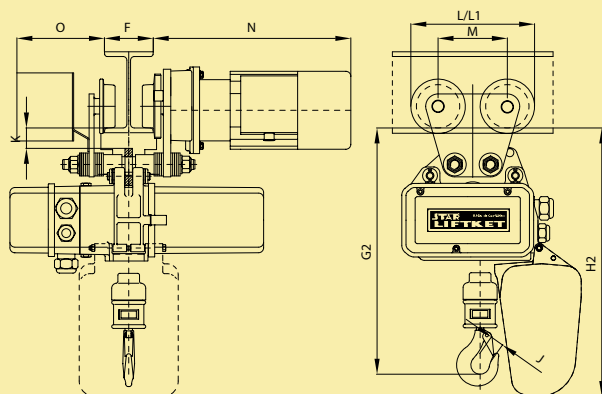
Basic version



... with hook suspension



... with electric trolley or push trolley



Three phase electric chain hoists

125 kg – 6300 kg

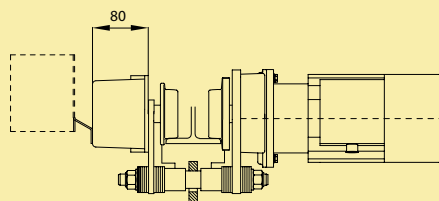
Please note:

- Power supply 400 V, 3 ph, 50 Hz
- Protection class IP55 / insulation class F
- Different voltage and frequency options available on request
- Control cable 1.5 m supplied as standard
- Height of lift 3 m supplied as standard, the hoist weight has been calculated for 3 m height of lift, hoist weight will increase by approximately 2 kg if low voltage control is required
- Different heights of lift and control cable lengths available on request
- For lifting heights greater than 20 m a reduction to the safe working load must be made for the additional weight of chain
- STAR models 090/..., 091/..., 110/... and 111/... have to be fitted with low voltage control only, if supplied without control upon the request a low voltage control has to be added before first operation. These STAR models are equipped with low voltage control as standard.

The technical data mentioned in the tables are approximate and subject to change.

Counter weights might be required for double speed trolleys for special combinations of load capacity, flange width and type of control (max. weight 9.4 kg).

Trolley capacity	Minimum radius of beam
up to 1000 kg	1.0 m
up to 3200 kg	1.5 m
up to 6300 kg	2.0 m





STAR LIFTKET

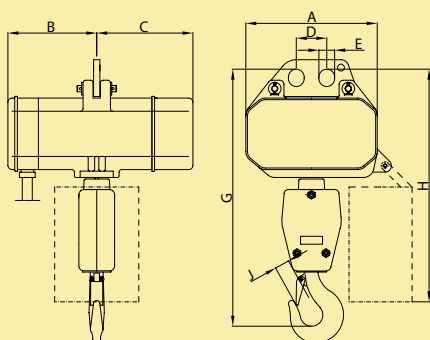
Capacity	Version	STAR-Model	Lifting speed	Num-bers of load falls	Duty group hoist FEM 9.511	Duty group load chain EN 818-7	Dimension of load chain DIN 5684-8	Lifting motor	Duty rate starts/hour	A	B	C	D	E	G	G1	G2	H	H1	H2	J	J1	Trolley type	F Flange width	Travelling speed	Travelling motor	K	L	L1	M	N for travelling speed	O for low voltage control only	Dia-meter of the wheels	Weights			
																																		STAR LIFTKET-Basic version kg	Push trolley kg	Electric trolley kg (m/min)	
125	125/1-8	020/52	8	1	3m	2m	4x12	0.25	60/360	212	192	218	58	27	354	432	401	409	487	456	20	22	500												17		
	125/1-8/2	021/53	8/2	1	3m	2m	4x12	0.32/0.08	60/40/240	212	192	218	58	27	354	432	401	409	487	456	20	22	500														
	125/1-24	020/50	24	1	3m	18m	4x12	0.55	60/240	212	192	218	58	27	354	432	401	409	487	456	20	22	500														
	125/1-24/6	051/50	24/6	1	3m	2m	5.2x15	0.55/0.12	60/25/240	266	232	274	58	30	390	462	436	449	522	505	20	22	500														
160	160/1-6/1.5	021/52	6/1.5	1	3m	2m	4x12	0.32/0.08	40/25/240	212	192	218	58	27	354	432	401	409	487	456	20	22	500	N S1 S2	50-106 110-200 210-300	16 or 25 or 5/20	0.12 or 0.12 or 0.04/0.18	33	200	216	112	220 (16 or 25) 292 (5/20)	142	70	17	8	15 (16 or 25) 18 (5/20)
	250/2-4	020/52	4	2	3m	2m	4x12	0.25	60/360	212	192	218	58	27	407	485	454	409	487	456	22	22	500														
	250/2-4/1	021/53	4/1	2	3m	2m	4x12	0.32/0.08	60/40/240	212	192	218	58	27	407	485	454	409	487	456	22	22	500														
	250/1-6	020/53	6	1	3m	2m	4x12	0.55	60/240	212	192	218	58	27	354	432	401	409	487	456	20	22	500														
	250/1-8	020/54	8	1	2m	18m	4x12	0.55	60/240	212	192	218	58	27	354	432	401	409	487	456	20	22	500														
	250/1-8/2	021/51	8/2	1	2m	18m	4x12	0.32/0.08	40/25/240	212	192	218	58	27	354	432	401	409	487	456	20	22	500														
	250/1-12	030/50	12	1	2m	2m	5.2x15	0.55	60/240	212	192	218	58	27	354	432	401	409	487	456	20	22	500														
	250/2-12	020/50	12	2	3m	18m	4x12	0.55	60/240	212	192	218	58	27	407	485	454	409	487	456	22	22	500														
	250/1-12/3	051/52	12/3	1	3m	2m	5.2x15	0.55/0.12	40/10/240	266	232	274	58	30	390	462	436	449	522	505	20	22	500														
	250/2-12/3	051/50	12/3	2	3m	2m	5.2x15	0.55/0.12	60/25/240	266	232	274	58	30	443	515	489	449	522	505	22	22	500														
	250/1-18/4,5	051/55	18/4,5	1	3m	2m	5.2x15	0.9/0.2	60/25/240	266	232	274	58	30	390	462	436	449	522	505	20	22	500														
	250/1-24	050/52	24	1	3m	18m	5.2x15	1.1	60/240	266	232	274	58	30	390	462	436	449	522	505	20	22	500														
	320	320/2-3/0,75	021/52	3/0,75	2	3m	2m	4x12	0.32/0.08	40/25/240	212	192	218	58	27	407	485	454	409	487	456	22	22												500		
		320/1-10	030/53	10	1	18m	2m	5.2x15	0.55	40/240	212	192	218	58	30	354	432	410	409	487	456	20	22												1000		
400	400/1-10	050/53	10	1	1Am	18m	5.2x15	0.75	60/240	266	232	274	58	30	390	462	446	449	522	505	20	22	1000	N S1 S2	66-135 137-215 220-300	16 or 25 or 5/20	0.12 or 0.12 or 0.04/0.18	38 36 34.5	200	216	112	220 (16 or 25) 292 (5/20)	146	70	18	10	17 (16 or 25) 19 (5/20)
	33	10																																			
500	500/2-3	020/53	3	2	3m	2m	4x12	0.55	60/240	212	192	218	58	27	407	485	454	409	487	456	22	22	500	N S1 S2	50-106 110-200 210-300	16 or 25 or 5/20	0.12 or 0.12 or 0.04/0.18	33	200	216	112	220 (16 or 25) 292 (5/20)	142	70	19	8	15 (16 or 25) 18 (5/20)
	500/2-4	020/54	4	2	2m	18m	4x12	0.55	60/240	212	192	218	58	27	407	485	454	409	487	456	22	22	500														
	500/2-4/1	021/51	4/1	2	2m	18m	4x12	0.32/0.08	40/25/240	212	192	218	58	27	407	485	454	409	487	456	22	22	500														
	500/2-6	030/50	6	2	2m	2m	5.2x15	0.55	60/240	212	192	218	58	27	407	485	454	409	487	456	22	22	500														
	500/2-6/1,5	051/52	6/1,5	2	3m	2m	5.2x15	0.55/0.12	40/10/240	266	232	274	58	30	443	515	489	449	522	505	22	22	500														
	500/1-8	030/52	8	1	18m	18m	5.2x15	0.7	40/240	212	192	218	58	30	354	432	410	409	487	456	20	22	1000														
	500/2-9/2,25	051/55	9/2,25	2	3m	2m	5.2x15	0.9/0.2	60/25/240	266	232	274	58	30	443	515	489	449	522	505	22	22	500														
	500/1-10	070/51	10	1	2m	2m	7.2x21	1.1	60/240	266	232	274	58	30	404	492	460	451	539	507	22	28	1000														
	500/1-10/2,5	071/53	10/2,5	1	2m	2m	7.2x21	0.9/0.2	60/25/240	266	232	274	58	30	404	492	460	451	539	507	22	28	1000														
	500/2-12	050/52	12	2	3m	18m	5.2x15	1.1	60/240	266	232	274	58	30	443	515	489	449	522	505	22	22	500														
630	630/2-5	030/53	5	2	18m	2m	5.2x15	0.55	40/240	212	192	218	58	30	407	485	463	409	487	456	22	22	1000	N S1 S2	66-135 137-215 220-300	16 or 25 or 5/20	0.12 or 0.12 or 0.04/0.18	38 36 34.5	200	216	112	220 (16 or 25) 292 (5/20)	146	70	19	10	17 (16 or 25) 19 (5/20)
	630/1-10	070/57	10	1	2m	2m	7.2x21	1.1	60/240	266	232	274	58	30	404	492	460	451	539	507	22	28	2000														
	800/2-5	050/53	5	2	1Am	18m	5.2x15	0.75	60/240	266	232	274	58	30	443	515	499	449	522	505	22	22	1000														
	800/1-8	070/54	8	1	2m	2m	7.2x21	1.1	60/240	266	232	274	58	30	404	492	460	451	539	507	22	28	2000														
	1000/2-4	030/52	4	2	18m	18m	5.2x15	0.7	40/240	212	192	218	58	30	407	485	463	409	487	456	22	22	1000														
	1000/2-5	070/51	5	2	2m	2m	7.2x21	1.1	60/240	266	232	274	58	30	514	602	570	511	599	567	28	28	1000														
	1000/2-5,1,25	071/53	5,1,25	2	2m	2m	7.2x21	0.9/0.2	60/25/240	266	232	274	58	30	514	602	570	511	599	567	28	28	1000														
	1000/1-6	070/55	6	1	1Am	18m	7.2x21	1.1	40/240	266	232	274	58	30	404	492	460	451	539	507	22	28	2000														
	1000/1-6,1,5	071/55	6,1,5	1	1Am	18m	7.2x21	1,1/0,2	60/25/240	266	232	274	58	30	404	492	460	451	539	507	22	28	2000														
	1000/1-8	090/54	8	1	3m	3m	9x27	2.2	60/240	358	285	359	85	34	491	616	550	619	744	678	28	30	2000														
	1000/1-8/2	091/51	8/2	1	3m	3m	9x27	1,8/0,45	60/25/240	358	285	359	85	34	491	616	550	619	744	678	28	30	2000														
	1000/1-10	070/53	10	1	1Am	18m	7.2x21	1.7	60/240	266	232	274	58	30	404	492	460	451	539	507	22	28	2000														
	1000/1-10	090/52	10	1	3m	3m	9x27	3.0	60/240	358	285	359	85	34	491	616	550	619	744	678	28	30	2000														
	1000/1-10/2,5	091/52	10/2,5	1	3m	3m	9x27	1,8/0,45	60/25/240	358	285	359	85	34	491	616	550	619	744	678	28	30	2000														
1250	1250/2-5	070/57	5	2	2m	2m	7.2x21	1.1	60/240	266	232	274	58	30	514	602	570	511	599	567	28	28	2000	N S1 S2	66-135 137-215 220-300	16 or 25 or 5/20	0.12 or 0.12 or 0.04/0.18	38 36 34.5	200	216	112	220 (16 or 25) 292 (5/20)	146	70	41	10	17 (16 or 25) 19 (5/20)
	1250/1-8	070/56	8	1	18m	18m	7.2x21	1.7	60/240	266	232	274	85	34	421	492	480	468	539	527	22	28	3200	N S1 S2	82-155 137-215 220-300	8 or 12 or 5/20	0.12 or 0.12 or 0.04/0.18	38,5 37 34,5	288,5	293,5	152,5	263 (8 or 12) 385 (5/20)	147	103	42	22	29 (8 or 12) 30 (5/20)
1600	1600/2-4	070/54	4	2	2m	2m	7.2x21	1.1	60/240	266	232	274	58	30	514	602	570	511	599	567	28	28	2000	N S1 S2	66-135 137-215 220-300	16 or 25 or 5/20	0.12 or 0.12 or 0.04/0.18	38 36 34,5	200	216	112	220 (16 or 25) 292 (5/20)	146	70	47	10	17 (16 or 25) 19 (5/20)
	1600/1-8	090/55	8	1	2m	2m	9x27	2,2	60/240	358	285	359	85	34	491	616	550	619	744	678	28	30	3200	N S1 S2													

Three phase electric chain hoists

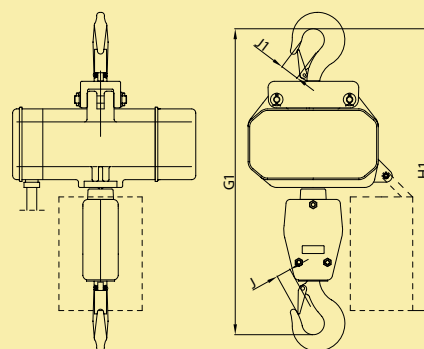
125 kg – 2000 kg

Version 1–5.1

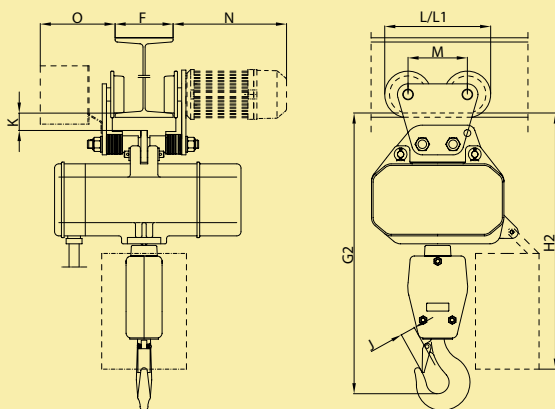
Basic version



... with hook suspension



... with electric trolley or push trolley



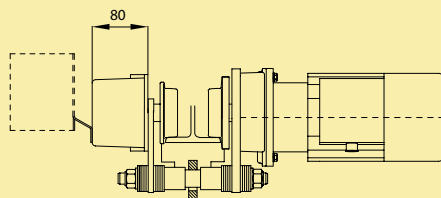
Three phase electric chain hoists
125 kg – 2000 kg

Please note:

- Power supply 400 V, 3 ph, 50 Hz
- Protection class IP54 / Insulation class F
- Different voltage and frequency options available on request
- Control cable 1.5 m supplied as standard
- Height of lift 3 m supplied as standard, the hoist weight has been calculated for 3 m height of lift, hoist weight will increase by approximately 2 kg if low voltage control is required
- Different heights of lift and control cable lengths available on request
- For lifting heights greater than 20 m a reduction to the safe working load must be made for the additional weight of chain

The technical data mentioned in the tables are approximate and subject to change.

Counter weights might be required for double speed trolleys for special combinations of load capacity, flange width and type of control (max. weight 9.4 kg).



Trolley capacity	Minimum radius of beam
up to 1000 kg	1.0 m
up to 3200 kg	1.5 m



LIFTKET



LIFTKET electric chain hoists are known for their low headroom design to provide a maximum lifting height, their helical gears with very quiet run made from high quality alloy steel and their low weight due to the very durable aluminium casing. They are available with suspension eye, hook suspension, with push trolleys or electric trolleys.

Capacity	Version	Model	Lifting speed	Number of load chain	Duty group FEM 9.511	Dimension of load chain DIN 5684	Lifting motor	Duty rate starts/hour	A	B Direct control	B Low voltage control	C	D	E	G	G1	G2	H	H1	H2	J	J1	Trolley type	F Flange width	Travelling speed	Travelling motor	K	L	L1	M	N for travelling speed	O for low voltage control only	Diameter of the wheels	Weights														
																																		LIFTKET-Basic version	Push trolley	Electric trolley												
kg			m/min			mm	kW	ED%/S/h	mm	mm	mm	mm	mm	mm	mm	mm	mm	mm	mm	mm	mm	mm		mm	m/min	kW	mm	mm	mm	mm	mm (m/min)	mm	mm	kg	kg	kg (m/min)												
125	125/1-8	1/00A	8	1	2m	4x12	0.18	40/240	188	167	230	145	58	27	345	424	391	369	448	415	20	22	500	N S1 S2	50-106 110-200 210-300	16 or 25 or 5/20	0.12 0.12 0.04/0.18	33	200	216	112	220 (16 25) 292 (5/20)	142	70	15													
150	150/1-24	2/53D	24	1	2m	5x15	1.1	40/240	260	199	246	200	58	27	385	464	431	496	581	548	20	22	500												26													
250	250/2-4	1/00A	4	2	2m	4x12	0.18	40/240	188	167	230	145	58	27	372	451	418	369	448	415	22	22	500												16													
	250/1-6	1.1/00B	6	1	1Bm	4x12	0.27	25/150	188	172	235	145	58	27	345	424	391	369	448	415	20	22	500												15													
	250/1-8/2	3/00G	8/2	1	2m	5x15	0.6/0.1	60/25/240	260	199	246	200	58	27	385	464	431	496	581	548	20	22	500												26													
	250/1-12	2/00D	12	1	2m	5x15	0.75	40/240	260	199	246	200	58	27	385	464	431	496	581	548	20	22	500												26													
	250/1-16	2/50D	16	1	2m	5x15	1.1	40/240	260	199	246	200	58	27	385	464	431	496	581	548	20	22	500												26													
	250/1-16/4	5/50I	16/4	1*	2m	5x15	1.1/0.2	40/10/240	260	199	246	245	58	30	385	464	445	501	600	557	20	28	N S1 S2												66-135 137-215 220-300	16 or 25 or 5/20	0.12 0.12 0.04/0.18	38 36 34.5	200	216	112	220 (16 25) 292 (5/20)	146	70	36	10	17 (16 25) 19 (5/20)	
300	300/2-12	2/53D	12	2	2m	5x15	1.1	40/240	260	199	246	200	58	27	438	517	484	496	581	548	22	22	500												N S1 S2	50-106 110-200 210-300	16 or 25 or 5/20	0.12 0.12 0.04/0.18	33	200	216	112	220 (16 25) 292 (5/20)	142	70	28		
500	500/2-3	1.1/00B	3	2	1Bm	4x12	0.27	25/150	188	172	235	145	58	27	372	451	418	369	448	415	22	22	500																							16		
	500/2-4/1	3/00G	4/1	2	2m	5x15	0.6/0.1	60/25/240	260	199	246	200	58	27	438	517	484	496	581	548	22	22	500	28																								
	500/2-6	2/00D	6	2	2m	5x15	0.75	40/240	260	199	246	200	58	27	438	517	484	496	581	548	22	22	500	28																								
	500/2-8	2/50D	8	2	2m	5x15	1.1	40/240	260	199	246	200	58	27	438	517	484	496	581	548	22	22	500	28																								
	500/1-10	4/00H	10	1	2m	7x22	0.84	40/240	260	199	246	200	58	30	403	496	455	501	600	557	22	28	1000	30																								
	500/1-10/2.5	5/00I	10/2.5	1	2m	7x22	1.1/0.2	40/10/240	260	199	246	245	58	30	403	496	455	501	600	557	22	28	1000	36																								
1000	1000/2-5	4/00H	5	2	2m	7x22	0.84	40/240	260	199	246	200	58	30	496	589	548	501	600	557	28	28	1000	N S1 S2	66-135 137-215 220-300	16 or 25 or 5/20	0.12 0.12 0.04/0.18	38 36 34.5	200	216	112	220 (16 25) 292 (5/20)	146	70												34		
	1000/1-5	4.1/00J	5	1	1Bm	7x22	0.84	25/150	260	213	260	200	58	30	403	496	455	501	600	557	22	28	2000																							31		
	1000/2-5/1.25	5/00I	5/1.25	2	2m	7x22	1.1/0.2	40/10/240	260	199	246	245	58	30	496	589	548	501	600	557	28	28	1000																							39		
	1000/1-5/1.25	5.1/00K	5/1.25	1	1Bm	7x22	1.1/0.2	25/10/150	260	213	260	245	58	30	403	496	455	501	600	557	22	28	2000												37													
	1000/1-10	4.2/00M	10	1	1Bm	7x22	2.2	25/150	260	213	260	245	58	30	403	496	455	501	600	557	22	28	2000												37													
	2000/2-2.5	4.1/00J	2.5	2	1Bm	7x22	0.84	25/150	260	213	260	200	58	30	496	589	548	501	600	557	28	28	2000												36													
2000	2000/2-2.5/0.6	5.1/00K	2.5/0.6	2	1Bm	7x22	1.1/0.2	25/10/150	260	213	260	245	58	30	496	589	548	501	600	557	28	28	2000												41													
	2000/2-5	4.2/00M	5	2	1Bm	7x22	2.2	25/150	260	213	260	245	58	30	496	589	548	501	600	557	28	28	2000												41													

* single fall only



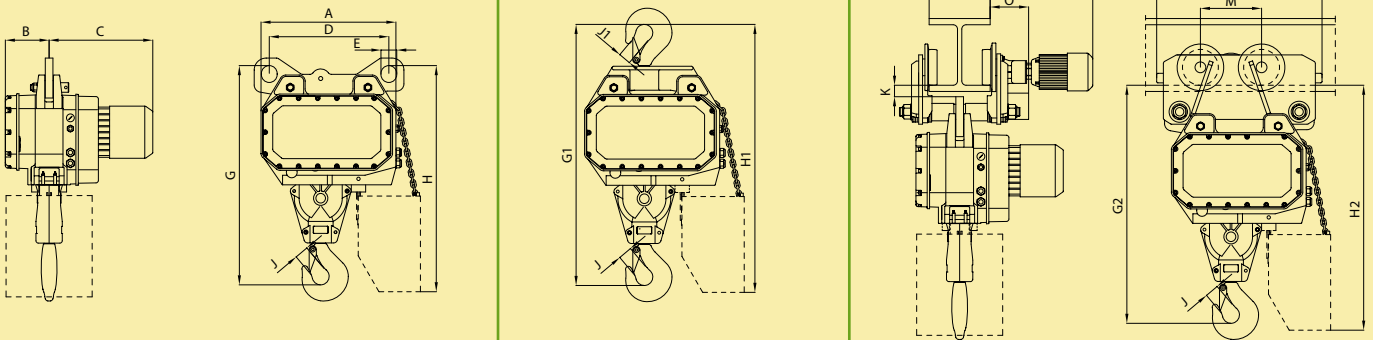
Three phase electric chain hoists 4000 kg – 25000 kg

Version 13/00X

Basic version

... with hook suspension

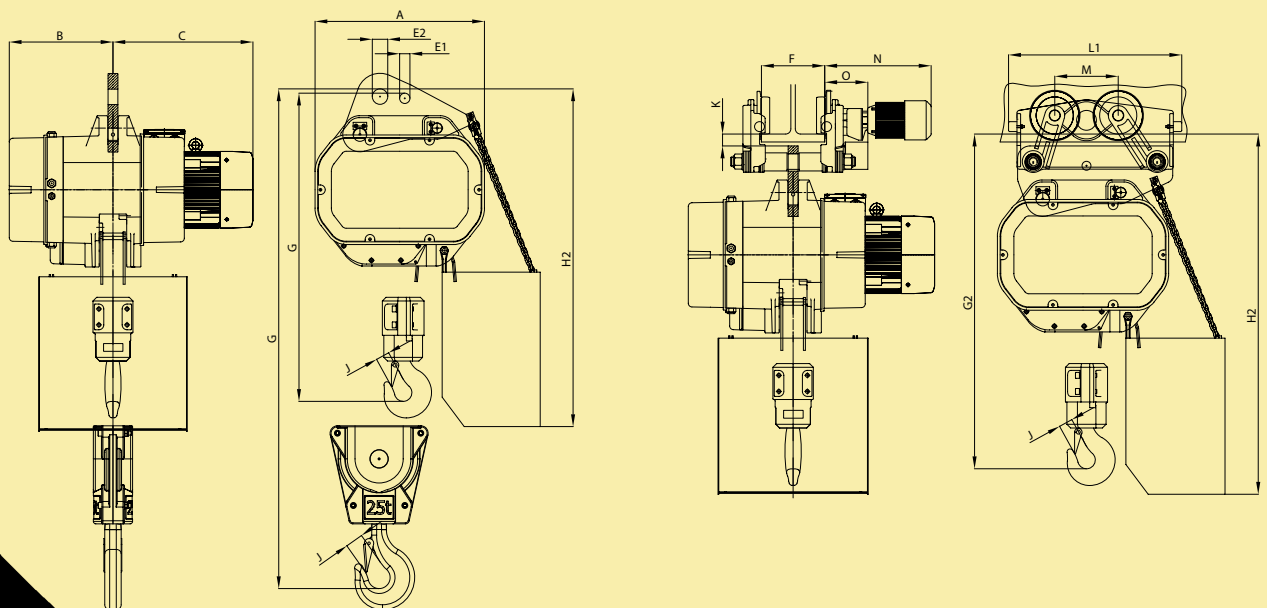
... with electric trolley



Model STAR 235/50

single/double fall, stationary – 12500kg/25000 kg

single fall, one electric trolley – 12500 kg



POWER LIFTKET



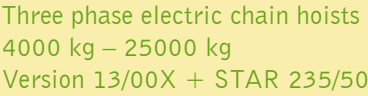
25 tons

on two chain falls only

Applications for the POWER LIFTKET

- Single point suspension, the chain leaves the hoist at a single point giving a true vertical lift
- Suitable for construction industry and heavy maintenance work
 - variable lifting heights are available
 - various suspensions are available
- The unit can be foot mounted to optimize lifting height

single fall, two electric trolleys – 12500 kg, for conversion to 25000 kg	double fall, two electric trolleys – 25000 kg
---	---



- Power supply 400 V, 3 ph, 50 Hz
- Version 13/00X – Protection class IP54
- STAR 235/50 – Protection class IP55
- Insulation class F
- Different voltage and frequency options are available
- Equipped with 24 V low voltage control as standard
- Electric limit switches
- Control cable 1.5 m supplied as standard
- Height of lift 3 m supplied as standard,
the hoist weight has been calculated for 3 m height of lift
- Different heights of lift and control cable lengths available
on request
- For lifting heights greater than 10 m a reduction to the safe
working load must be made for the additional weight of chain

The technical data mentioned in the tables are approximate and subject to change.



Electric chain hoists for special applications



Electric chain hoist
with internal
planetary gear
limit switch and
double brake



The list of options is quite long. All our hoists are available with either direct or low voltage control; many with encoders, electromechanical load sensors, double brakes and variable speed (frequency controls). These are only a few examples of the special accessories available.

LIFTKET electric chain hoists with three phase motors for use at stages and in studios

Electric chain hoists for use at stages or in studios incorporate highly specialised solutions and are usually modified for the required application which may vary from customer to customer and from market to market. To list all the possible modifications would exceed the space of this brochure. Would you please send your requirements to receive your detailed offer.

A) Electric chain hoists acc. to German standard BGV D8

- Capacity from 125 kg up to 12500 kg with single fall load chain and different speed variations (please send your requirements)
- One brake
- Most models are available for upright and for inverted use as well
- Available with direct or low voltage control
- Hoists can be combined with controls of different makes, internal planetary gear limit switches, incremental encoders or low voltage control can be ordered optionally

B) Electric chain hoists acc. to German standard VPLT SR 2.0 D8plus or BGV C1

- Capacity from 125 kg up to 3000 kg with single fall load chain and different speed variations (please send your requirements)
- Double brake
- Most models are available for upright and for inverted use as well
- Electric chain hoists acc. to VPLT SR 2.0 D8plus are available with direct or low voltage control. Hoists acc. to BGV C1 are to be equipped with low voltage control, special four position internal planetary gear limit switches, mechanical slack chain prevention or electronic underload and overload protection.
- Incremental encoder can be ordered optionally

Electric chain hoist 500 kg certified according to German BGV C1 standard with worm gear and without electromagnetic load brake, very quiet run



Super-short headroom design
(in this case based on version B13)



Hoists with special chain guide,
e. g. for use at stages and in studios





Hoists for bigger lifting heights



Super-short headroom design based on version B13, capacity 10 tons in this case



Chains and hooks made from stainless steel



Special pendant to control two hoists

The perfect solution to lift long loads synchronously.

The STAR LIFTKET with two load chains is currently available up to 2 x 250 kg, with a hook to hook distance 600 mm–2000 mm (standard) or 2000 mm–5000 mm (optional). The data sheet is available on request.



Remark: Our electric chain hoists are available with cULus certificate (for USA and Canada). Some parts and the prices may vary from the EU-Standard versions.



Radio control

STAR LIFTKET single phase electric chain hoists 125 kg – 2000 kg

(detail drawings page 4–6)

Capacity	Version	STAR-Model	Lifting speed	Numbers of load falls	Duty group hoist FEM 9.511	Duty group load chain EN 818-7	Dimension of load chain DIN 5684-8	Lifting motor	Duty rate starts/hour	A	B	C	D	E	G	G1	G2	H	H1	H2	J	J1	Trolley type	F Flange width	K	L	M	O	Dia-meter of the wheels	Weights		
										mm	mm	mm	mm	mm	mm	mm	mm	mm	mm	mm	mm	mm								mm	mm	mm
kg			m/min				mm	kW	ED%/S/h	mm	mm	mm	mm	mm	mm	mm	mm	mm	mm	mm	mm	mm		mm	mm	mm	mm	mm	mm	kg	kg	
125	125/1-24	050/01	24	1	3m	2m	5.2x15	0.55	40/240	266	232	274	58	30	390	462	436	449	522	505	20	22	500	N S1 S2	50-106 110-200 210-300	33	200	112	142	70	33	8
250	250/1-8	020/01	8	1	2m	1Bm	4x12	0.35	40/240	212	192	218	58	27	354	432	401	409	487	456	20	22	500								17	
	250/2-12	050/01	12	2	3m	2m	5.2x15	0.55	40/240	266	232	274	58	30	443	515	489	449	522	505	22	22	500								35	
500	500/2-4	020/01	4	2	2m	1Bm	4x12	0.35	40/240	212	192	218	58	27	407	485	454	409	487	456	22	22	500	N S1 S2	66-135 137-215 220-300	38 36 34.5	200	112	146	70	19	10
	500/1-8	050/02	8	1	1Am	1Bm	5.2x15	0.7	40/240	266	232	274	58	30	390	462	436	449	522	505	20	22	1000								33	
	500/1-10	070/02	10	1	2m	2m	7.2x21	1.1	40/240	266	232	274	58	30	404	492	460	451	539	507	22	28	1000								36	
1000	1000/2-4	050/02	4	2	1Am	1Bm	5.2x15	0.7	40/240	266	232	274	58	30	443	515	489	449	522	505	22	22	1000	N S1 S2	66-135 137-215 220-300	38 36 34.5	200	112	146	70	35	10
	1000/2-5	070/02	5	2	2m	2m	7.2x21	1.1	40/240	266	232	274	58	30	514	582	570	511	599	567	28	28	1000								41	
	1000/1-6	070/01	6	1	1Am	1Bm	7.2x21	1.1	40/240	266	232	274	58	30	404	492	460	451	539	507	22	28	2000								36	
2000	2000/2-3	070/01	3	2	1Am	1Bm	7.2x21	1.1	40/240	266	232	274	58	30	514	582	570	511	599	567	28	28	2000							41		

Please note:

- Power supply 230 V, 1 ph, 50 Hz
- Protection class IP55 / insulation class F
- Control cable 1.5 m supplied as standard
- Height of lift 3 m supplied as standard, the hoist weight has been calculated for 3 m height of lift
- Different heights of lift and control cable lengths available on request
- For lifting heights greater than 20 m a reduction to the safe working load must be made for the additional weight of chain.

The technical data mentioned in the tables are approximate and subject to change.

All the advantages of the standard STAR LIFTKET chain hoists are incorporated in the models with single phase motors, the special safety clutch/brake system and the low headroom. These hoists are designed for construction sites and places without a three phase power supply. Due to the excellent thermal performance of the motor a high duty rate and longer lifting heights are possible. All single phase electric chain hoists require a minimum diameter of 2.5 sq. mm for the power and control cable for trouble-free operation. The power supply cable should be as short as possible.

Single bolt push and electric trolleys as light crane components

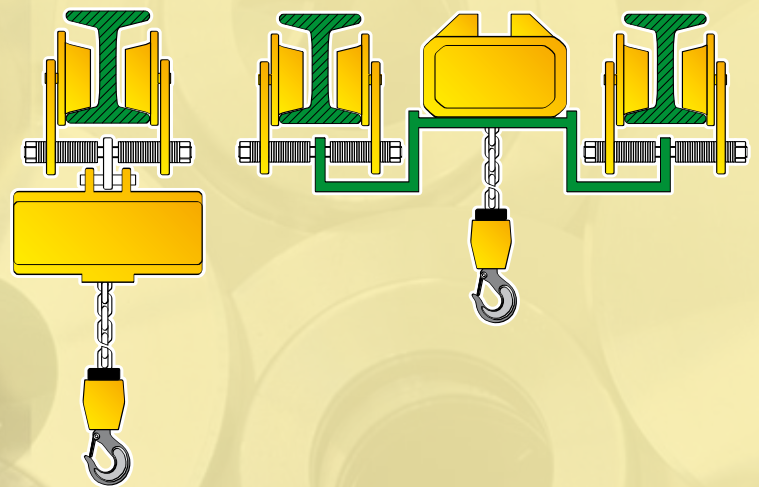
LIFTKET push and electric trolleys are robust, durable and all-round applicable light crane components



- All wheels are equipped with roller bearings and wear-resistant surface, the higher capacity wheels being case-hardened
- Suitable for use on parallel and tapered flanges
- The electric trolley motor is protected to IP54
- All trolleys are equipped with safety drop stop
- All parts are virtually maintenance free
- All the electric trolleys are equipped with our robust electromagnetic disk brake
- All bolts, distance tubes and spacing washers are galvanized for better corrosion protection

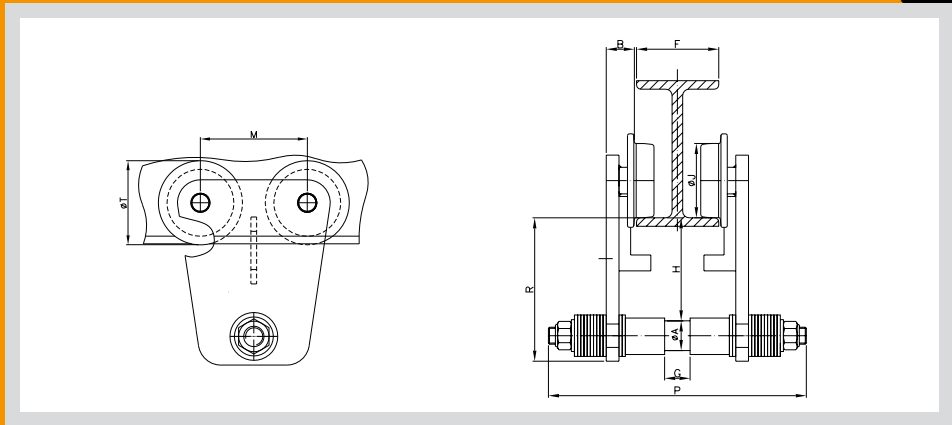
LIFTKET crane trolleys for underslung cranes allow two options to design the crane:

A standard headroom monorail crane and a double girder crane including the foot mounted hoist for improved headroom.



Single bolt push trolleys

Technical data



Type	EHFN 1000	EHFS1 1000	EHFS2 1000	EHFN 2000	EHFS1 2000	EHFS2 2000	EHFN 3200	EHFS1 3200	EEFS2 3200
Capacity (kg)	1000	1000	1000	2000	2000	2000	3200	3200	3200
Dimension F (mm)	66–135	137–215	220–300	66–135	137–215	220–300	82–155	137–215	220–300
Dimension Ø A (mm)	28	32	35	35	40	45	45	50	55
Dimension B (mm)	26.5	26.5	26.5	26.5	26.5	26.5	28	28	28
Dimension G (mm)	24	24	24	24	24	24	32	32	32
Dimension H (mm)	71	69	67.5	87.5	85	82.5	93	90.5	88
Dimension Ø J (mm)	70	70	70	70	70	70	103	103	103
Dimension M (mm)	112	112	112	112	112	112	152.5	152.5	152.5
Dimension Ø T (mm)	88	88	88	88	88	88	136	136	136
Dimension P (mm)	243	325	409	268	348	434	332	390	482
Dimension R (mm)	109	109	109	135	135	135	156	156	156
Weight (kg)	8	9	10	11	12	14	23	25	28

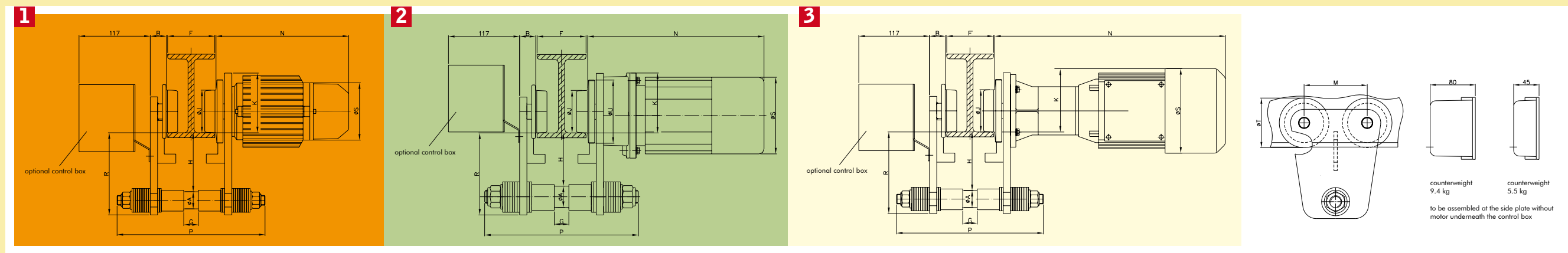
Type	EHFN 5000	EHFS1 5000	EHFS2 5000	EHFN 6300	EHFS1 6300	EHFS2 6300
Capacity (kg)	5000	5000	5000	6300	6300	6300
Dimension F (mm)	90–115	160–226	240–300	90–115	160–226	240–300
Dimension Ø A (mm)	50	55	63	50	55	63
Dimension B (mm)	41	41	41	41	41	41
Dimension G (mm)	35	35	35	35	35	35
Dimension H (mm)	95	92.5	88.5	95	92.5	88.5
Dimension Ø J (mm)	122	122	122	122	122	122
Dimension M (mm)	191	191	191	191	191	191
Dimension Ø T (mm)	160	160	160	160	160	160
Dimension P (mm)	345	414	496	345	414	496
Dimension R (mm)	170	170	170	170	170	170
Weight (kg)	44	45	49	44	45	49



Single bolt electric trolleys

Technical data

For your underslung crane
with capacities up to 6300 kg
we recommend to use our
STAR LIFTKET electric chain hoist.



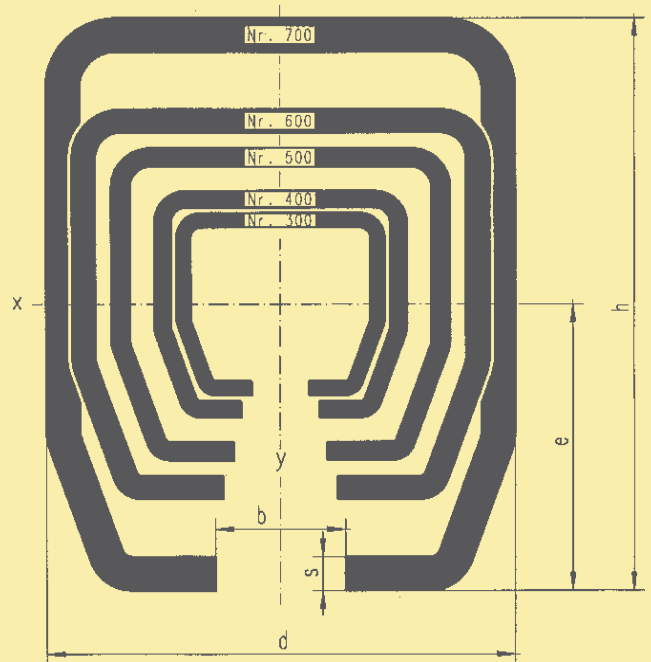
Type	EEFN 1000	EEFS1 1000	EEFS2 1000	EEFN 2000	EEFS1 2000	EEFS2 2000	EEFN 3200	EEFS1 3200	EEFS2 3200	EEFN 5000	EEFS1 5000	EEFS2 5000	EEFN 6300	EEFS1 6300	EEFS2 6300
Speed (m/min) Motor output [kW]	1 16 or 25 [0.12]	1 16 or 25 [0.12]	1 16 or 25 [0.12]	1 16 or 25 [0.12]	1 16 or 25 [0.12]	1 16 or 25 [0.12]	3 5+20 [0.04/0.18]	3 5+20 [0.04/0.18]	3 5+20 [0.04/0.18]	3 4+16 [0.06/0.25]	3 4+16 [0.06/0.25]	3 4+16 [0.06/0.25]	3 4+16 [0.06/0.25]	3 4+16 [0.06/0.25]	3 4+16 [0.06/0.25]
	2 5+20 [0.04/0.18]	2 5+20 [0.04/0.18]	2 5+20 [0.04/0.18]	2 5+20 [0.04/0.18]	2 5+20 [0.04/0.18]	2 5+20 [0.04/0.18]	3 7.5+30 [0.06/0.25]	3 7.5+30 [0.06/0.25]	3 7.5+30 [0.06/0.25]						
	3 7.5+30 [0.06/0.25]	3 7.5+30 [0.06/0.25]	3 7.5+30 [0.06/0.25]	3 7.5+30 [0.06/0.25]	3 7.5+30 [0.06/0.25]	3 7.5+30 [0.06/0.25]									
Capacity (kg)	1000	1000	1000	2000	2000	2000	3200	3200	3200	5000	5000	5000	6300	6300	6300
Dimension F (mm)	66–135	137–215	220–300	66–135	137–215	220–300	82–155	137–215	220–300	90–155	160–226	240–300	90–155	160–226	240–300
Dimension Ø A (mm)	28	32	35	35	40	45	45	50	55	50	55	63	50	55	63
Dimension B (mm)	26.5	26.5	26.5	26.5	26.5	26.5	28	28	28	41	41	41	41	41	41
Dimension N (mm)	1 192	1 192	1 192	1 192	1 192	1 192	3 356	3 356	3 356	3 407	3 407	3 407	3 407	3 407	3 407
	2 264	2 264	2 264	2 264	2 264	2 264	3 356	3 356	3 356						
	3 356	3 356	3 356	3 356	3 356	3 356									
Dimension G (mm)	24	24	24	24	24	24	32	32	32	35	35	35	35	35	35
Dimension H (mm)	71	69	67.5	87.5	85	82.5	93	90.5	88	95	92.5	88.5	95	92.5	88.5
Dimension Ø J (mm)	70	70	70	70	70	70	103	103	103	122	122	122	122	122	122
Dimension K (mm)	1 98	1 98	1 98	1 98	1 98	1 98	3 122	3 122	3 98	3 141	3 141	3 141	3 141	3 141	3 122
	2 101	2 101	2 101	2 99	2 99	2 99	3 122	3 122	3 98						
	3 122	3 122	3 122	3 122	3 122	3 122									
Dimension Ø T (mm)	88	88	88	88	88	88	136	136	136	160	160	160	160	160	160
Dimension Ø U (mm)	104	104	104	104	104	104	141	141	141	160	160	160	160	160	160
Dimension M (mm)	112	112	112	112	112	112	152.5	152.5	152.5	191	191	191	191	191	191
Dimension P (mm)	243	325	409	268	348	434	332	390	482	345	414	496	345	414	496
Dimension R (mm)	109	109	109	135	135	135	156	156	156	170	170	170	170	170	170
Dimension Ø S (mm)	1 94	1 94	1 94	1 94	1 94	1 94	3 140	3 140	3 140	3 140	3 140	3 140	3 140	3 140	3 140
	2 126	2 126	2 126	2 126	2 126	2 126	3 140	3 140	3 140						
	3 140	3 140	3 140	3 140	3 140	3 140									
Weight (kg)	1 16	1 17	1 18	1 18	1 20	1 21	3 36	3 38	3 41	3 61	3 63	3 67	3 61	3 63	3 67
	2 17	2 18	2 19	2 20	2 22	2 23	3 35	3 37	3 40						
	3 20	3 21	3 22	3 22	3 24	3 25									

For narrow girders and low weight of the electric trolley or if used for other applications than a crane trolley a counterweight to compensate the weight of the motor might be necessary.
All single bolt electric trolleys are available with a 24 V control (Power supply by a separate transformer is available as an option).



Advantages

- Easy to install, using standard fastener sets
- A great variety of special parts available including curved rails, turntables, switches, single and double girder crane bridges and fastening equipment
- Taylor made solutions available
- Galvanised or black finish available
- Once the system has been installed it can be upgraded or extended at any time



LIFTKET monorail and light crane system



The LIFTKET monorail profiles are available made from either S235JR material (standard steel) or 1.4301 material (stainless steel except type 600 and 700). Standard steel profiles are in stock with black surface or galvanised. The max. length of each profile is 6 m. Please note, when planning the system: The max. load per meter of monorail has to be checked, especially for buffer sections of the monorail system.

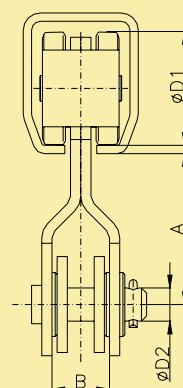
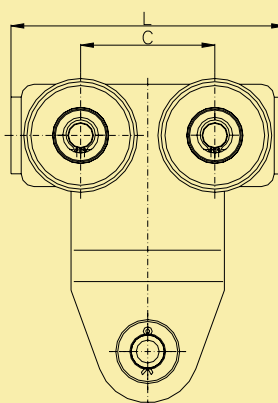
Monorail profile 300 – 700

Profile	H	d	b	s	Wx	Ix	e	Weights	Capacity
	mm	mm	mm	mm	cm ³	cm ⁴	mm	kg/m	kg*
No. 300	35	40	11	2.75	2.52	5.02	19.9	2.52	100
No. 400	43.5	48.5	15	3.2	4.4	10.93	24.8	3.57	200
No. 500	60	65	18	3.6	10.07	34.08	33.8	5.63	500
No. 600	75	80	22	4.5	19.76	83.08	42	8.77	1000
No. 700	110	90	25	6.5	51.68	312.71	60.5	16.46	1600

* Capacity per meter with a suspension distance 1 m

Monorail trolleys for use on the LIFTKET monorail system

Dimension	Trolley type			
	1418	1518	1618	1718
Profile No.	400	500	600	700
L [mm]	100	130	150	214
C [mm]	52	66	75	105
A [mm]	65	76	91.5	117
Diameter 1 [mm]	34	48	60	89
Diameter 2 [mm]	16	20	22	26
B [mm]	30	35	35	45
Load [kg]	125	250	500	1000



HOFFMANN Fördertechnik GmbH Wurzen

Dresdener Straße 64–68 · D-04808 Wurzen · Germany

phone: +49-3425-89 24-0 · fax: +49-3425-89 24-99

e-mail: sales@liftket.de · internet: <http://www.liftket.de>

Ho 2010/01:

Previous editions are no longer valid. Subject to change without notice.

LIFTKET



Member of

