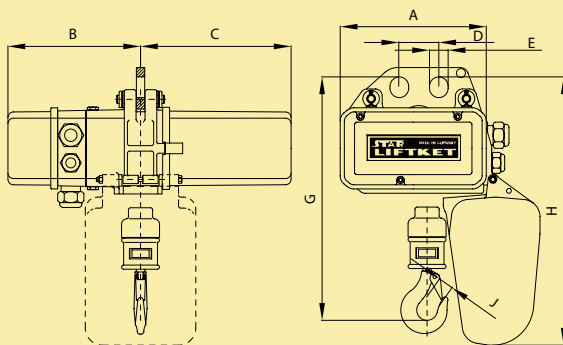


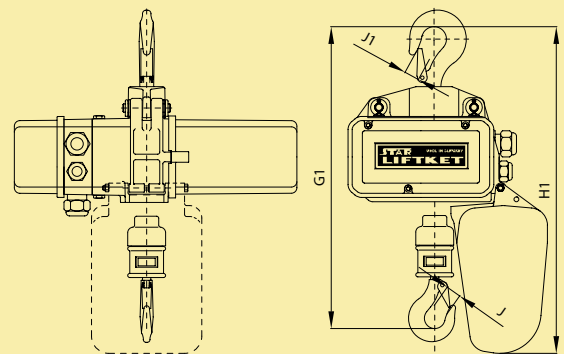
Three phase electric chain hoists

125 kg – 6300 kg

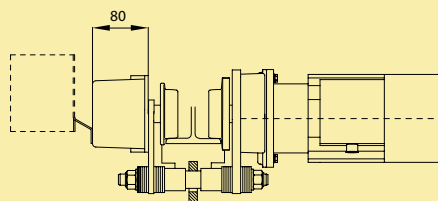
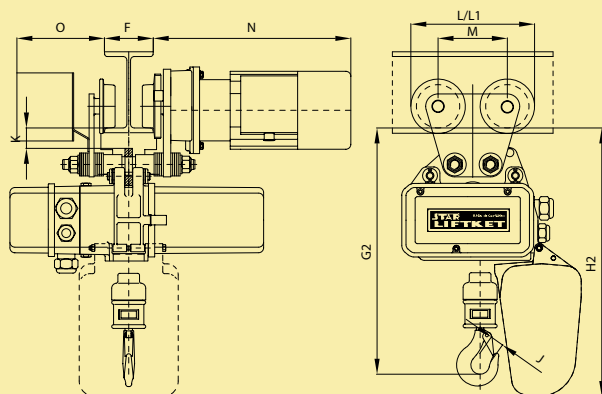
Basic version



... with hook suspension



... with electric trolley or push trolley



Three phase electric chain hoists

125 kg – 6300 kg

Please note:

- Power supply 400 V, 3 ph, 50 Hz
- Protection class IP55 / insulation class F
- Different voltage and frequency options available on request
- Control cable 1.5 m supplied as standard
- Height of lift 3 m supplied as standard, the hoist weight has been calculated for 3 m height of lift, hoist weight will increase by approximately 2 kg if low voltage control is required
- Different heights of lift and control cable lengths available on request
- For lifting heights greater than 20 m a reduction to the safe working load must be made for the additional weight of chain
- STAR models 090/..., 091/..., 110/... and 111/... have to be fitted with low voltage control only, if supplied without control upon the request a low voltage control has to be added before first operation. These STAR models are equipped with low voltage control as standard.

The technical data mentioned in the tables are approximate and subject to change.

Counter weights might be required for double speed trolleys for special combinations of load capacity, flange width and type of control (max. weight 9.4 kg).

Trolley capacity	Minimum radius of beam
up to 1000 kg	1.0 m
up to 3200 kg	1.5 m
up to 6300 kg	2.0 m



STAR LIFTKET

